



ISO Certified

Bath & Circulator

| Custom Logical Safe System |

New

Water Bath

Water Bath Circulator

Refrigerating bath Circulator



www.jeiotech.com



HOSU B/D 4F, 379-13, Seogyo-Dong, Mapo-Gu, Seoul 121-839 Korea
Tel : +82-2-3143-1823, 1825 Fax : +82-2-3143-1824
<http://www.jeiotech.com> e-mail : overseas@jeiotech.com

Manufacturer **Jeio Tech Co., Ltd.**



Water Bath



The Jeiotech CLS-Control system

In most cases with other brands of equipment the CPU comprises both control and safety features together. In the event of a failure in these CPUs, the logic controlling the safety features can also be compromised.

Jeio Tech has separated these two important elements and now have an independent safety system running alongside the performance controller. When any risk factors are sensed (eg:-voltage peak, short circuit, and over temperature) the machine will go into a recoverable safety mode as follows

- ▶ The power supply to individual components is isolated by a magnetic switch, leaving only the earth in circuit.
- ▶ Details of the fault are displayed (indicator codes).
- ▶ Audio visual alarms are set off to alert the user and remain on until attended.

BW-05G/10G/20G

Feature

- Three models according to bath volume (5L, 10L, 20L)
- Temp. range from ambient +5c to 100c.
- CLS (Custom Logical Safe)- Control System.
- PID microprocessor controller (touch pad type) achieves accurate temperature control.
- Auto-tuning function for exact temperature control.
- Bias function to calibrate temperature difference between display (SV) and actual temperature (PV) easily.
- Auto Run and Manual Run function allow user to start (auto) or stop (manual) the unit in case of power restore. (selective)
- Memory to store three temperature setting and single button to activate required set temperature.
- Electronic programmable timer for setting start and stop automatically. (max. to 99 hr 59min)
- Built-in over temperature protection device alarms visual and audible and heating stops.
- Built-in high temperature limit in main controller does not allow temperature over setting parameter value.
- Built-in low liquid level protection alarms visually and audibly and heating stops.
- Temperature unit display readout: C ; F ; °
- Lock function protects setting value from unintentional changes.
- Error message displays when wire of temperature probe is disconnected.
- Drain valve empties liquid conveniently.
- Seamless stainless steel bath (no welds or rust) for easy cleaning and ergonomic appearance.
- Various accessories (option) : spring wire rack (height adjustable), test tube racks.



Control panel



Spring wire rack

Test tube rack

Specifications

Spec.	Model	BW-05G	BW-10G	BW-20G
Volume Capacity		4~6L	9~11L	19~21L
Temp.	Range	Amb. + 5°C ~ 100°C		
	Accuracy	±0.1°C at 50°C		
	Uniformity	±0.2°C at 50°C		
	Heat up Time	50°C within 40min		
Controller	PID controlled microprocessor touch pad, Digital display			
Permissible environment condition	Temperature 5°C to 40 °C, Relative humidity 50% ~ 80%, Altitude up to 2,000m			
Material	Internal	Stainless steel, 1.0 t, Cubic Type		
	External	Steel, 1.0t, powder coating		
	Heating element	700W/230V 700W/120V	1000W/230V 1000W/120V	2000W/230V 1000W/120V
Sensor	pt 100 Ω			
Size(mm) (W×D×H)	Bath	285×150×160	340×211×180	400×290×200
	Top open	231×150	285×211	345×290
	Overall	355×260×334	410×311×354	471×390×374
Safety Device	CLS(Custom Logical Safe) - Control System			
Electric Requirement		230VAC, 50/60Hz. 3.0A 120VAC, 60Hz. 5.8A	230VAC, 50/60Hz. 4.3A 120VAC, 60Hz. 8.3A	230VAC, 50/60Hz. 8.7A 120VAC, 60Hz. 8.3A
	Weight	10.0kg	14.0kg	18.0kg
Cat.No.	230VAC, 50/60Hz	41405	41415	41425
	120VAC, 50/60Hz	41406	41416	41426
Weight(Net)	10.0kg	14.0kg	18.0kg	

Circulator

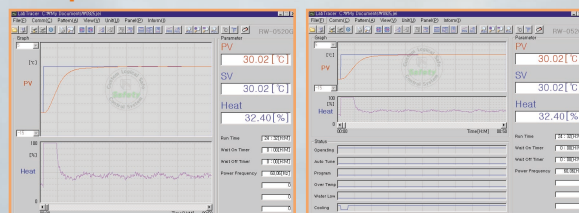
With RS232C Communication Interface and CD Software

Feature

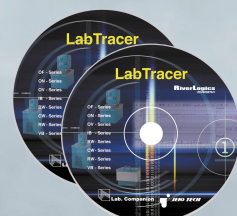
- Three models according to bath volume (5L,10L, 20L, 30L)
- CLS (Custom Logical Safe)- Control System.
- PID microprocessor controller (touch pad type) achieves accurate temperature control.
- Auto-tuning function for exact temperature control.
- Bias function to calibrate temperature difference between display (SV) and actual temperature (PV) easily.
- Auto Run and Manual Run function allow user to start (auto) or stop (manual) the unit in case of power restore. (selective)
- Memory to store three temperature setting and single button to activate required set temperature.
- Powerful Circulation Pump can circulate to external apparatus by closed loop.
- Electronic programmable timer for setting start and stop automatically.
- Built-in over temperature protection device alarms visual and audible and heating stops.
- Built-in high temperature limit in main controller does not allow temperature over setting parameter value.
- Built-in low liquid level protection alarms visually and audibly and heating stops.
- Perforated plate in a side tank protects heater, sensor and other important parts.
- Temperature unit display readout: C; F; °C; °F; °C; °F
- Lock function and protects setting value from unintentional changes.
- Error message displays when wire of temperature probe is disconnected.
- Drain valve empties liquid conveniently.
- Seamless stainless steel bath (no welds or rust) for easy cleaning and ergonomic appearance.
- Digital Controller has RS-232 interface for full remote PC control that can monitor temperature control and print graph of temperature and condition. (standard accessories: software (CD) and cable)



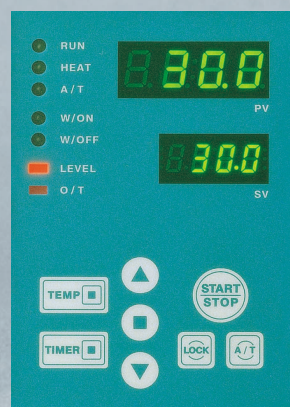
Computer Interface



Cable



Software(CD)



Control panel

CW-05G/10G/20G/30G

Specifications

Spec.	Model	CW-05G	CW-10G	CW-20G	CW-30G
Volume Capacity		4 ~ 6L	9 ~ 11L	19 ~ 21L	29 ~ 31L
Temp.	Range	40℃ ~ 150℃			
	Accuracy	± 0.05℃ at 50℃			
	Uniformity	± 0.1℃ at 50℃			
	Heat up Time	50℃ within 30 mins(230V/1000W)			
	Controller	PID Controlled microprocessor touch pad, Digital Display			
Permissible environment condition		Temperature : 5℃ to 40℃ Relative humidity : 50% ~ 80% Altitude : Up to 2,000m			
Material	Internal	Stainless steel, 1.0t, Cubic Type			
	External	Steel, 1.2t, powder coating			
Material	Heating element	1000W/230V 1000W/120V	1500W/230V 1000W/120V	2000W/230V 1000W/120V	2000W/230V
	Sensor	Pt 100 Ω			
Size(mm) (W×D×H)	Bath	150×285×160	211×340×180	290×400×200	300×450×230
	Top open	150×99	211×154	290×214	300×264
	Overall	220×395×424	281×450×444	360×510×464	370×560×494
Pump	Pressure	24 L/min			
	Height	4.0 m			
	Suction	10 L/min(Optional)			
	Material	Stainless Steel			
Safety Device		CLS(Custom Logical Safe) - Control System			
Electric Requirement		230VAC, 50/60Hz, 4.5A 120VAC, 60Hz, 8.6A	230VAC, 50/60Hz, 6.7A 120VAC, 60Hz, 8.6A	230VAC, 50/60Hz, 8.8A 120VAC, 60Hz, 8.6A	230VAC, 50/60Hz, 8.8A
Weight(Net)		12.5Kg	15Kg	17.5Kg	19.5Kg
Cat.No.	230VAC, 50/60Hz	52305	52315	52325	52335
	120VAC, 50/60Hz	52306	52316	52326	

CW-05GL/10GL/20GL/30GL

Specifications

Spec.	Model	CW-05GL	CW-10GL	CW-20GL	CW-30GL
Volume Capacity		4 ~ 6L	9 ~ 11L	19 ~ 21L	29 ~ 31L
Temp.	Range	Amb. +6℃(LID OPEN) ~ 100℃			
	Accuracy	± 0.05℃ at 50℃			
	Uniformity	± 0.1℃ at 50℃			
	Heat up Time	50℃ within 30 mins(230V/1000W)			
	Controller	PID Controlled microprocessor touch pad, Digital Display			
Permissible environment condition		Temperature : 5℃ to 40℃ Relative humidity : 50% ~ 80% Altitude : Up to 2,000m			
Material	Internal	Stainless steel, 1.0t, Cubic Type			
	External	Steel, 1.2t, powder coating			
Material	Heating element	1000W/230V 1000W/120V	1500W/230V 1000W/120V	2000W/230V 1000W/120V	2000W/230V
	Sensor	Pt 100 Ω			
Size(mm) (W×D×H)	Bath	150×285×160	211×340×180	290×400×200	300×450×230
	Top open	150×99	211×154	290×214	300×264
	Overall	220×395×424	281×450×444	360×510×464	370×560×494
Pump	Pressure	14 L/min			
	Height	2.6 m			
	Material	Stainless Steel			
Safety Device		CLS(Custom Logical Safe) - Control System			
Electric Requirement		230VAC, 50/60Hz, 4.5A 120VAC, 60Hz, 8.6A	230VAC, 50/60Hz, 6.7A 120VAC, 60Hz, 8.6A	230VAC, 50/60Hz, 8.8A 120VAC, 60Hz, 8.6A	230VAC, 50/60Hz, 8.8A
Weight(Net)		12.5Kg	15Kg	17.5Kg	19.5Kg
Cat.No.	230VAC, 50/60Hz	52305L	52315L	52325L	52335L
	120VAC, 50/60Hz	52306L	52316L	52326L	

Circulator

With RS232C Communication Interface and CD Software

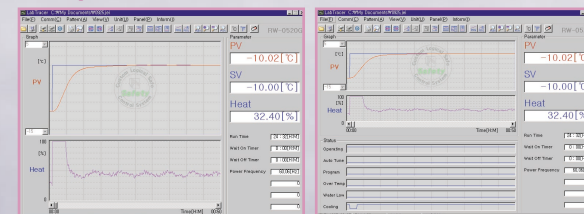
Feature

- Eight models according to volume (5L, 10L, 20L,30L) and temperature range(-25 ; ~ -40 ;)
- CLS (Custom Logical Safe)- Control System.
- Low temperature circulation systems (Max. - 25 C or -40 C)
- Economical and reliable automatic refrigeration system.
- PID microprocessor controller (touch pad type) achieves accurate temperature control.
- Auto-tuning function for exact temperature control.
- Bias function to calibrate temperature difference between display (SV) and actual temperature (PV) easily.
- Auto Run and Manual Run function allow user to start (auto) or stop (manual) the unit in case of power restore.(selective)
- Memory to store three temperature setting and single button to activate required set temperature.
- Powerful Circulation Pump can circulate to external apparatus by closed loop.
- Electronic programmable timer for setting start and stop automatically.(max. to 99 hr 59min)
- Built-in over temperature protection device alarms visual and audible and heating stops.
- Built-in high temperature limit in main controller does not allow temperature over setting parameter value.
- Built-in low liquid level protection alarms visually and audibly and heating stops.
- Perforated plate in a side tank protects heater, sensor and other important parts.
- Temperature unit display readout: C ; @ F ; ε
- Lock function protects setting value from unintentional changes.
- Error message displays when wire of temperature probe is disconnected.
- Drain valve empties liquid conveniently.
- Seamless stainless steel bath (no welds or rust) for easy cleaning and ergonomic appearance.
- Digital Controller has RS-232 interface for full remote PC control that can monitor temperature control and print graph of temperature and condition. (standard accessories: software (CD) and cable)

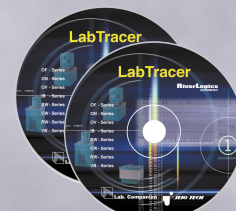
B a t h & C i r c u l a t o r



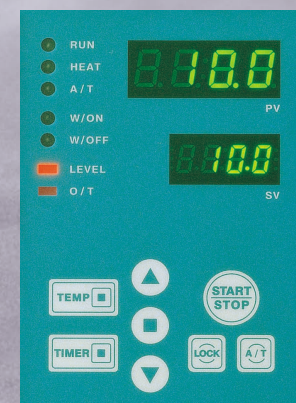
Computer Interface



Cable



Software(CD)



Control panel

RW-0525G/1025G/2025G/3025G

Specifications

Spec.	Model	RW-0525G	RW-1025G	RW-2025G	RW-3025G
Volume Capacity		4~6L	9~11L	19~21L	29~31L
Temp.	Range	-25℃ ~ 150℃			
	Accuracy	± 0.05℃ at -10℃			
	Uniformity	± 0.1℃ at -10℃			
	Cool down Time	-25℃ within 90 min(alcohol / ambient temp. 20℃)			
	Controller	PID Controlled microprocessor touch pad, Digital Display			
Permissible Environment Condition	Temperature : 5℃ to 40℃, Relative humidity : 50% ~ 80%, Altitude : Up to 2,000m, Indoor use pollution : Degree 2, Installation category (Over voltage category) : II				
Material	Internal	Stainless steel, 1.0t, Cubic Type			
	External	Steel, 1.2t, powder coating			
Material	Heating element	1000W/230V 1000W/120V	1500W/230V 1000W/120V	2000W/230V	2000W/230V
	Sensor	Pt 100 Ω			
Insulation	Bath	Polyurethane foam 30mm			
	Top open				
Size(mm) (W×D×H)	Bath	150×285×160	211×340×180	290×440×200	300×450×230
	Top open	150×99	211×154	290×214	300×264
	Overall	302×438×690	360×490×780	380×560×825	440×620×895
Pump	Pressure	24L/min			
	Height	4.0m			
	Suction	10L/min(Optional)			
	Material	Stainless steel mold pump			
Cooling Capacity(W)	at -20℃	70W	80W	250W	450W
	at 0℃	250W	350W	450W	650W
	at 20℃	300W	500W	600W	800W
Safety Device	CLS(Custom Logical Safe) - Control System				
Electric Requirement	230VAC, 50/60Hz, 6.7A 120VAC, 60Hz, 12.6A	230VAC, 50/60Hz, 9.8A 120VAC, 60Hz, 12.6A	230VAC, 50/60Hz, 12.6A	230VAC, 50/60Hz, 13.0A	
Weight	37kg	44kg	60kg	67kg	
Cat.No.	230VAC, 60HZ	57001	57011	57021	57031
	230VAC, 50HZ	57002	57012	57022	57032
	120VAC, 60HZ	57003	57013	-	-

RW-0540G/1040G/2040G/3040G

Specifications

Spec.	Model	RW-0540G	RW-1040G	RW-2040G	RW-3040G
Volume Capacity		4~6L	9~11L	19~21L	29~31L
Temp.	Range	-35℃ ~ 150℃			
	Accuracy	± 0.05℃ at -10℃			
	Uniformity	± 0.1℃ at -10℃			
	Cool down Time	-30℃ within 90 min(alcohol / ambient temp. 20℃,0540G)			
	Controller	PID Controlled microprocessor touch pad, Digital Display			
Permissible Environment Condition	Temperature : 5℃ to 40℃, Relative humidity : 50% ~ 80%, Altitude : Up to 2,000m, Indoor use pollution : Degree 2, Installation category (Over voltage category) : II				
Material	Internal	Stainless steel, 1.0t, Cubic Type			
	External	Steel, 1.2t, powder coating			
Material	Heating element	1000W/230V	1500W/230V	2000W/230V	2000W/230V
	Sensor	Pt 100 Ω			
Insulation	Bath	Polyurethane foam 30mm			
	Top open				
Size(mm) (W×D×H)	Bath	150×285×160	211×340×180	290×440×200	300×450×230
	Top open	150×99	211×154	290×214	300×264
	Overall	302×438×690	360×490×780	380×560×825	440×620×895
Pump	Pressure	24 L/min			
	Height	4.0m			
	Suction	10 L/min(Optional)			
	Material	Stainless steel mold pump			
Cooling Capacity(W)	at -20℃	150W	220W	320W	360W
	at 0℃	200W	300W	400W	440W
	at 20℃	310W	450W	600W	640W
Safety Device	CLS(Custom Logical Safe) - Control System				
Electric Requirement	230VAC, 50/60Hz, 8.5A	230VAC, 50/60Hz, 10.7A	230VAC, 50/60Hz, 13.8A	230VAC, 50/60Hz, 15.0A	
Weight	38kg	44kg	60kg	67kg	
Cat.No.	230VAC, 60HZ	57101	57111	57121	57131
	230VAC, 50HZ	57102	57112	57122	57132